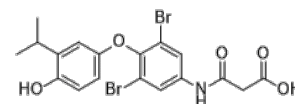


**Product Name** : Eprotirome  
**Cat. No.** : PC-24487  
**CAS No.** : 355129-15-6  
**Molecular Formula** : C<sub>18</sub>H<sub>17</sub>Br<sub>2</sub>NO<sub>5</sub>  
**Molecular Weight** : 487.14  
**Target** : Thyroid Hormone Receptor (THR)  
**Solubility** : 10 mM in DMSO



### Biological Activity

Eprotirome (KB-2115) is a liver-specific thyromimetic and thyroid hormone receptor-beta (TR $\beta$ ) agonist with modestly higher affinity for TR $\beta$  than for TR $\alpha$ , reduces serum cholesterol independent of the LDL receptor.

Eprotirome (KB-2115) is a potent and effective reducer of serum LDL cholesterol in LDLR $-/-$  mice.

Eprotirome (KB-2115) also prevented hepatic steatosis but did not induce fasting hyperglycemia, increase basal EGP rate, or diminish hepatic insulin sensitivity in in fat-fed rats.

### References

Lin JZ, et al. Endocrinology. 2012 Dec;153(12):6136-44.

Ladenson PW, et al. N Engl J Med. 2010 Mar 11;362(10):906-16.

Vatner DF, et al. Am J Physiol Endocrinol Metab. 2013 Jul 1;305(1):E89-100.

**Caution: Product has not been fully validated for medical applications. Lab Use Only!**

E-mail: tech@probechem.com